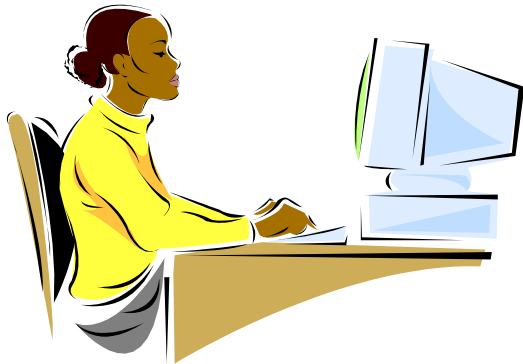


SCU Faculty and Staff Introduction to Health Information eResources Part 2



Janet G Schnall, MS, AHIP
University of Washington
Health Sciences Library
schnall@uw.edu
Swaziland, November 2013

*Partially adapted from I-TECH Basic Course in Health Sciences Library Management, 2012
and the World Health Organization HINARI Short Course, 2013.*

Objectives

By the end of the session, participants will be able to:

- Describe the **basics of searching CINAHL** to find citations to health-related journal articles
- List additional HINARI databases, i.e., POPLINE
- Explain how to search for publications from individual publishers.
- Identify resources for **HINARI** instruction
- Describe features of **Advanced Google** and **Google Scholar**
- Discuss how to **evaluate resources on the web**
- Locate **teaching materials** on the web

Using CINAHL via the HINARI Gateway: Objectives

- Access CINAHL via the HINARI gateway.
- Describe how CINAHL and HINARI can be used together.
- Conduct a basic search for citations, abstracts, and articles in CINAHL.
- Save and send CINAHL search results to an e-mail address or print.
- Identify additional resources for CINAHL instruction.

CINAHL + HINARI: Why both?

- **Used together, CINAHL and HINARI allow for more efficient and effective searching.**
 - CINAHL helps you to conduct targeted searches of peer-reviewed health literature.
 - CINAHL shows you what information is available on a specific topic.
 - HINARI provides the free, full-text access to the articles that you find via CINAHL.

ACCESS THE CINAHL DATABASE ON HINARI THROUGH THE LINK: *SEARCH INSIDE HINARI FULL-TEXT THROUGH DATABASE AND ARTICLE SEARCHING.*

- HINARI
- About HINARI
- Access the HINARI database
- Eligibility
- Partners
- Training Materials
- FAQs

Register
Find out what you need to know about HINARI

From the HINARI Content page, you also can open the **Search inside HINARI full-text through database and article searching**, **Reference sources** and **Free collections** lists.

Note: Many of these resources are underutilized by HINARI users as most individuals concentrate on obtaining full-text journal articles.

Filter by: **Subject** | **Language** | **Publisher**

Developing world to access health research

[T](#) [U](#) [V](#) [W](#) [X](#) [Y](#) [Z](#)

[Search inside HINARI full-text through database and article searching](#)

[Reference sources](#)

Free collections

-- SELECT FREE COLLECTION --

[T](#) [U](#) [V](#) [W](#) [X](#) [Y](#) [Z](#)

[Search inside HINARI full-text using PubMed more info](#)



To Search the CINAHL database click on the “Search inside HINARI full-text through database and article searching” link on HINARI.

- HINARI
- About HINARI
- Access the database
- Eligibility
- Partners
- Training Materials
- FAQs

Register for HINARI
Find out what you need to know about registering

Sorted by: Subject Language Publisher

Developing world to access health research

[A](#) [B](#) [C](#) [D](#) [E](#) [F](#) [G](#) [H](#) [I](#) [J](#) [K](#) [L](#) [M](#) [N](#) [O](#) [P](#) [Q](#) [R](#) [S](#) [T](#) [U](#) [V](#) [W](#) [X](#) [Y](#) [Z](#)
[View complete list of journals](#)

Books collection

[A](#) [B](#) [C](#) [D](#) [E](#) [F](#) [G](#) [H](#) [I](#) [J](#) [K](#) [L](#) [M](#) [N](#) [O](#) [P](#) [Q](#) [R](#) [S](#) [T](#) [U](#) [V](#) [W](#) [X](#) [Y](#) [Z](#)
[View complete list of books](#)

[Search inside HINARI full-text using PubMed](#) [more info](#)

[Search inside HINARI full-text through database and article searching](#)

[Reference sources](#)

Free collections

-- SELECT FREE COLLECTION --

- HINARI
- About HINARI
- Access the content
- Eligibility
- Partners
- Training Materials
- FAQs

Content Home

Find by: **Subject** **Language** **Publisher**

Browse databases

Accessible Content All Items

You have full access to this content through HINARI.

You do not have full access to this content through HINARI.

Here is the link to the CINAHL database.

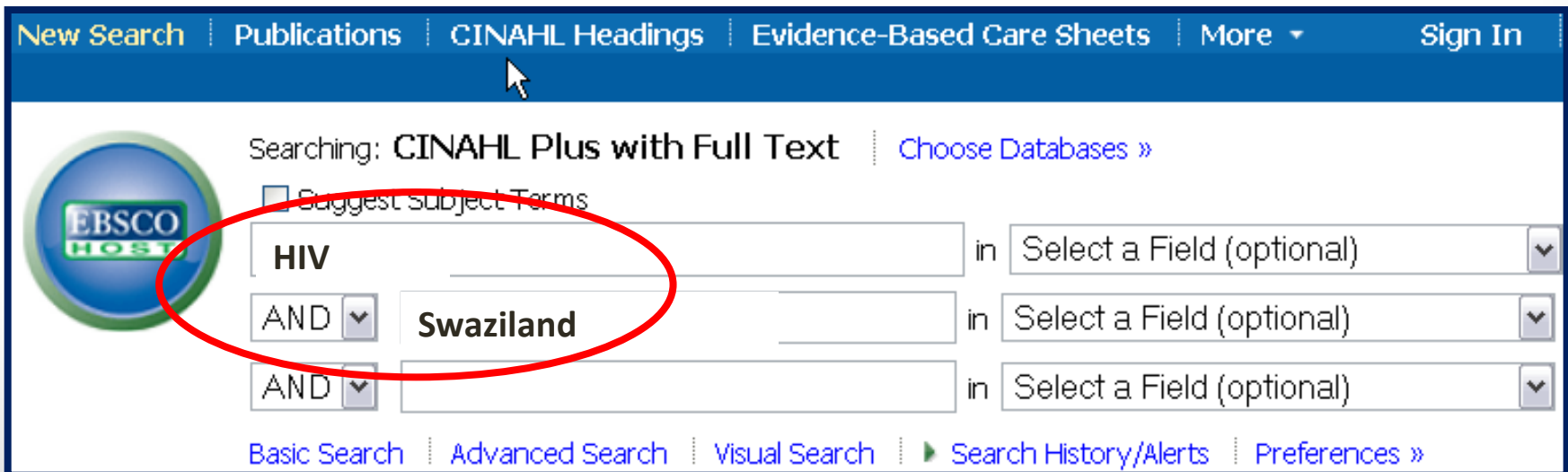
- African Journals Online
- AIM (African Index Medicus)
- Bill Tracker
- BLDS Index Medicus Development Studies
- CINAHL
- Environmental Issues & Policy Index
- Food Science and Technology Abstracts - (1994 - 2008)
- General Case Digest
- Global Health Archive (1910 - 1972)
- Google Scholar
- Halsbury's Laws Index
- Halsbury's SI Citator
- Halsbury's Statutes Citator
- IMEMR (Index Medicus for the WHO Eastern Mediterranean Region)
- IMSEAR (Index Medicus for South-East Asia Region)
- Informit Health Collection
- Key OJ Material
- LILACS (Latin Am. & Carib. Center on Health Sci Info)
- Popline
- Scirus
- Scopus (Elsevier)
- Specialist News Analysis
- Summon-HINARI Search (pilot)
- UK Act Summaries
- UK Journals Index

Register for HINARI
Find out what you need to know about registering

What is CINAHL? CINAHL®

Available via EBSCOhost®

- CINAHL - Cumulative Index to Nursing and Allied Health Literature
- Provides access to the literature in nursing and 17 allied health disciplines, including: medical/laboratory technology and radiologic technology.
- Over 4600 journals are indexed, including virtually all English language nursing journals along with selected titles in biomedicine, alternative therapies, and consumer health.



New Search | Publications | CINAHL Headings | Evidence-Based Care Sheets | More ▾ | Sign In

Searching: CINAHL Plus with Full Text | [Choose Databases »](#)

Suggest subject Terms

HIV in Select a Field (optional) ▾

AND ▾ Swaziland in Select a Field (optional) ▾

AND ▾ in Select a Field (optional) ▾

[Basic Search](#) | [Advanced Search](#) | [Visual Search](#) | [Search History/Alerts](#) | [Preferences »](#)

Searching CINAHL

- Enter **your subject terms**.
 - Type your search terms into the search boxes on the Advanced screen.
 - Choose the field(s) you want to search from the pull down boxes and click Search.
 - Use the asterisk (*) to search word roots, e.g. transplant* retrieves transplant, transplants, or transplantation
- **Limit your Search**.
 - Narrow your search to a lower number of more precise results by **selecting options** such as Research Article, desired Age Groups, Language, Publication Type, Peer Reviewed, etc. from the options available by clicking **Show More** in the left column next to the Search Results.
 - Note: **Clinical Queries refinement**, which limits search retrieval to scientifically sound and clinically relevant study reports in five research areas: therapy, prognosis, review, qualitative and causation (etiology).
 - Note: option to limit results where either **the First Author is a Nurse or Any Author is a Nurse**.

Limit your Results in CINAHL

Limit your results

Full Text

Abstract Available

Published Date from

Month Year: to Month
Year:

Peer Reviewed

Research Article



Exclude MEDLINE records

Clinical Queries

All
Therapy - High Sensitivity
Therapy - High Specificity
Therapy - Best Balance

Publication Type

Statistics
Systematic Review
Tables/Charts
Teaching Materials

Age Groups

Child: 6-12 years
Adolescent: 13-18 years
Adult: 19-44 years
Middle Aged: 45-64 years

References Available

Publication Year from

to

Author

Publication

English Language



Exclude Pre-CINAHL

Include Pre-CINAHL

Evidence-Based Practice

Journal Subset

All
Africa
Allied Health
Alternative/Complementary Therapies

Language

All
Afrikaans
Chinese
Danish

Pregnancy

Inpatients

Outpatients

View Results and Find Full-Text

- **View results:**
 - Click on the **Article Title** to view more information.
 - Change the way all results are displayed using the **Page Options** link above the search results.
 - If the full text of an article is contained within CINAHL, images found from within the article, such as tables and figures, may appear below the citation in the search results
- **Find full-text articles:**
 - Look for links to HTML or PDF Full Text below each citation.
 - If full-text is not available through CINAHL, **check the HINARI journal list by title of the journal.**

1. Evaluation of an Intervention to Increase Human Immunodeficiency Virus Testing Among Youth in Manzini, Swaziland: A Randomized Control Trial.



Academic Journal

(includes abstract) Burnett, Sarah M.; Weaver, Marcia R.; Mody-Pan, Priti N.; Reynolds Thomas, Liz A.; Mar, Corinne M.; Journal of Adolescent Health, 2011 May; 48 (5): 507-13. (journal article - randomized controlled trial, research, tables/charts) ISSN: 1054-139X PMID: 21501811

Abstract: There is an urgent need for effective HIV prevention programs for adolescents in Swaziland, given the high prevalence of HIV and lack of HIV-related knowledge and skills among Swazi you...

Subjects: HIV Infections; HIV Education; HIV Education; Health Knowledge; HIV Infections; Health Behavior; Adolescent: 13-18 years; Male; Female



2. Effectiveness of a training program to increase the capacity of health care providers to provide HIV/AIDS care and treatment in Swaziland.



Academic Journal

(includes abstract) Kamiru HN; Ross MW; Bartholomew LK; McCurdy SA; Kline MW; AIDS Care, 2009 Nov; 21 (11): 1463-70. (journal article - research, tables/charts) ISSN: 0954-0121 PMID: 20024725

Implementation of HIV care and treatment programs in sub-Saharan Africa is a complex undertaking that requires training of health care providers (HCPs). Many sub-Saharan African countries have in...

Subjects: Acquired Immunodeficiency Syndrome; Antiviral Agents; Attitude of Health Personnel; Health Personnel; HIV Education; HIV Infections; Self-Efficacy; Adult: 19-44 years; Female; Male



[PDF Full Text \(109.4KB\)](#)

← Link to full text

3. Experiences of nurses working in Voluntary Counseling and Testing Services in Swaziland.



Academic Journal

(includes abstract) Mkhabela MPS; Mavundla TR; Sukati NA; JANAC: Journal of the Association of Nurses in AIDS Care, 2008 Nov-Dec; 19 (6): 470-9. (journal article - research, tables/charts) ISSN: 1055-3290 PMID: 19007725

Swaziland is among the countries in the sub-Saharan Africa with high rates of HIV infection. The Swazi Government established Voluntary Counseling and Testing Services (VCT) as part of its respon...

Subjects: Empowerment; HIV Education; Infection; Stress, Occupational; Volunteer Workers; Female; Male

Cited References: (39) Times Cited in this Database: (4)

5. Primary and preferred sources for HIV/AIDS and sexual risk behavior information among adolescents in Swaziland, Southern Africa.



Academic Journal

(includes abstract) Buseh AG; Glass LK; McElmurry BJ; Mkhabela M; Sukati NA; International Journal of Nursing Studies, 2002 Jul; 39 (5): 525-38. (journal article - pictorial, research, tables/charts) ISSN: 0020-7489 PMID: 11996873

The HIV/AIDS epidemic in Sub-Saharan Africa poses a massive diffusion and persuasion challenge for health professionals. Individuals working with adolescents to prevent the spread of HIV/AIDS mus...

Subjects: HIV Education; Students, High School; Student Attitudes; Risk Taking Behavior; Sex Education; Adolescent: 13-18 years; Male; Female

Cited References: (44) Times Cited in this Database: (4)

Print, Email, Save, Export Results

- **To move groups of records:** use the **Folder** feature.
 - Click **Add to folder** below your desired citations .
 - **Open** your folder by clicking Folder at the top of the page.
 - Select items by checking individual boxes or Select All.
 - Select the action you would like to take.
 - **Print** - Select from the available formatting options. Click Print.
 - **Email** - Fill out the form including full email address and subject for the email subject line. Select other options e.g., format, and click Send.
 - **Save** - Choose your options as above. Click Save.
 - **Export** - Automatically move results to EndNote Basic. Check the radio button beside Direct Export to the software of your choice. Click Save. EndNote Basic should now activate.
NOTE: Check your references after import to make sure they have imported correctly.
- **To move individual records:**
 - Click on the title of the article to see the full record and the options as above.

CINAHL Basic Tips

Try This...	Tell CINAHL...
Limit to Research Articles	Check the <i>Research Article</i> box to show only research articles in your results
Limit to Peer Reviewed Articles	Check the <i>Peer Reviewed</i> box to show only results from peer reviewed journals in your results
Exclude PubMed Results	Check the <i>Exclude MEDLINE Records</i> box to show only results unique to CINAHL
Limit to Evidence-Based Practice	Check the <i>Evidence-Based Practice</i> box to retrieve articles from evidence-based practice journals
Find Similar Results	View a citation of interest and click the title to see the Detailed Record. Click on <i>Find Similar Results</i> on the left side of the screen.
Search by CINAHL Heading	Select a citation of interest and click the title to see the Detailed Display. Inspect the <i>Major Subjects and Minor Subjects</i> fields in the citation record. Click on an individual term to run a search on that subject heading or copy desired terms into individual search boxes to create a new search.

CINAHL Instruction

- For more detailed information on searching the CINAHL database, see:
 - the CINAHL section on the *Swaziland: Health-related Information Resources for on Students and Faculty* libguide <http://libguides.hsl.washington.edu/swaziland>
 - CINAHL User Guide http://support.epnet.com/knowledge_base/detail.php?id=4256

Using **POPLINE**[®]

- *www.popline.org*
- A database of population, family planning, and reproductive health literature
- Search for journal articles, books, grey literature
- **Offers document delivery of full-text documents and articles at no cost to Swaziland individuals and institutions**
 - Limit request to maximum 15 documents.
 - To order a document or article via POPLINE, click on the “Add to Cart” option in the citation.

POPLINE Search Request

All Fields AND ▾ family planning

Title AND ▾

Keyword AND ▾ Adolescents ○

Region/Country AND ▾ Africa Sub Saharan ○

Author AND ▾

Source AND ▾

Language AND ▾ ○

Years From To

Document #

Limit By Peer Reviewed Journal Article Gray Literature

POPLINE Search Results

Sort by: [Relevancy](#) [Most Recent](#)

Your search found 19 Results

Filter By Keywords:

[Adolescents](#)

[Research Report](#)

[Reproductive Health](#)

[Adolescents Female](#)

[Family Planning](#)

Filter By Region / Country:

[Africa](#)

[Africa Sub Saharan](#)

Filter By Year:

[2013](#)

[2012](#)

[2011](#)

[2008](#)

[2001](#)

1 335200

 Peer Reviewed [FULL TEXT](#)

Tell them you are planning for the future: Gender norms and family planning among adolescents in northern Uganda.

Adams MK; Salazar E; Lundgren R

International Journal of Gynecology and Obstetrics. 2013; [4] p.



2 335102

 Peer Reviewed [DOI](#) [FULL TEXT](#)

Reproductive health service utilization and associated factors among adolescents (15-19 years old) in Gondar town, Northwest Ethiopia.

Feleke SA; Koye DN; Demssie AF; Mengesha ZB

BMC Health Services Research. 2013 Aug 3; 13:294.



3 338055

 Peer Reviewed [DOI](#)

Individual-and School-Level correlates of HIV Testing among secondary school students in Kenya.

Tenkorang EY; Maticka-Tyndale E

Studies in Family Planning. 2013 Jun; 44(2):169-187.



Search HINARI by Publisher

- Go to the **Publisher link** where you can browse publications from individual publisher partners in HINARI.
- **Select** a publisher from drop down menu.
 - Ex. BMJ Publishing Group
- Publications from the publisher will be listed alphabetically.



Logged in from: Test Account

- HINARI
- About HINARI
- Access the content
- Eligibility
- Partners
- Training Materials
- FAQs

Register for HINARI
Find out what you need to know about registering



© WHO 2012

Content Home

Find by:

Subject

Language

Publisher

Browse publisher

-- SELECT A PUBLISHER --

-- SELECT A PUBLISHER --
You have full access to:

- Academia Mexicana de Cirugía
- Academic Journals
- Academy for Continuing Medical Education
- Academy of Sciences for the Developing World (TWAS)
- Adis, a Wolters Kluwer business
- Advanced Research Journals
- African Field Epidemiology Network
- Ahwaz Jundishapur University of Medicine
- Akadémiai Kiadó
- Al Ameen Medical College
- AlphaMed Press
- AMALTEA Medical Publishing House
- American Academy of Family Physicians
- American Academy of Orthopaedic Surgeons
- American Academy of Pediatrics
- American Association for Cancer Research
- American Association for Clinical Chemistry
- American Association for the Advancement of Science

We have clicked on the Publisher drop down menu.
Note the list of publishers "You have full access to:"

Content Home

Find by:

Subject

Language

Publisher

Browse publisher - BMJ Publishing Group (Journals)



-- SELECT A PUBLISHER --

Accessible Content

All Items

You have full access to this content through HIN

You do not have full access to this content through HIN

We have opened the **BMJ Publishing Group** list of journals.

Acupuncture in Medicine (BMJ Publishing Group (Journals)) v. 1 (1982) - current issue

Annals of the Rheumatic Diseases (BMJ Publishing Group (Journals)) v. 1 (1939) - current issue

Archives of Disease in Childhood (BMJ Publishing Group (Journals)) v. 1 (1926) - current issue

Archives of Disease in Childhood: Education & Practice (BMJ Publishing Group (Journals)) v. 89 (2004) - current issue

Archives of Disease in Childhood: Fetal & Neonatal Edition (BMJ Publishing Group (Journals)) v. 70 (1994) - current issue

Archives of Emergency Medicine (BMJ Publishing Group (Journals)) v. 1 (1984) - v. 10 (1993)

BMJ Case Reports (BMJ Publishing Group (Journals)) 2008 - current issue

BMJ Open (BMJ Publishing Group (Journals)) v. 1 (2011) - current issue

BMJ Open Diabetes Research & Care (BMJ Publishing Group (Journals)) v. 1 (2013) - current issue

BMJ Open Respiratory Research (BMJ Publishing Group (Journals)) v. 1 (2013) - current issue

BMJ Quality & Safety (BMJ Publishing Group (Journals)) v. 20 (2011) - current issue

What is copyright?

- A legal concept, enacted by most governments, **giving the creator of an original work exclusive rights to it**, usually for a limited time, with the intention of enabling the creator of intellectual wealth (e.g. the photographer of a photograph or the author of a book) to get compensated for their work.
- Gives **the copyright holder the right to be credited for the work**, to determine who may adapt the work to other forms, who may perform the work, who may financially benefit from it, and more.
- People at SCU with HINARI access may make multiple copies of materials to be distributed to people **within** that institution. This is an **exception to most licensing regulations**.

Copyright & HINARI eJournals

- eJournals are protected by copyright law in the same way as printed journals.
- Their use is subject to the terms of a license agreed between the institution and the publisher which permits certain activities and forbids others.
- **In HINARI, users can copy up to 15% of a journal issue, distribute to colleagues within the institution, and use for educational purposes at SCU.**
- Users **cannot** distribute copies to individuals outside the institution, change the content, load material on a publically accessible server or use for profit.

See HINARI 'Do's and Don'ts document for further details

www.who.int/hinari/training/dosanddont/en/index.html

Additional HINARI Training

- See *Swaziland: Health Information Resources for Students and Faculty at SCU* libguide for training resources libguides.hsl.washington.edu/swaziland
- The HINARI homepage has a “Training Materials” link.
- Can also go directly to: www.who.int/hinari/training/en/



Logged in from: Test Account

- HINARI
- About HINARI
- Access the content
- Eligibility
- Partners
- Training Materials**
- FAQs

Content Home

Find by: Subject Language Publisher

HINARI - Enabling the developing world to access health research

Journals collection

View complete list of journals

Books collection

View complete list of books

Search inside HINARI full-text using PubMed more info

Additional HINARI training is linked from either the HINARI home page or a **Training Materials** link on the **HINARI Access the content** page. This link will direct you to additional resources.

Register for HINARI
Find out what you need to know about registering



Contact us Privacy Policy

Training Materials include:

- **Distance Learning courses:** HINARI short course; 4-6 hrs.
- **HINARI User Training Video Series:** series of short videos on HINARI basics; total 30 minutes
- **Training modules:** comprehensive overview of HINARI with exercises; 9 modules
- **Brief Training:** HINARI short course
- **Training Tools:** 9 PowerPoint presentations on HINARI [see next slide for examples]
- **Presentations**
- **Authorship skills:** how to write a paper, copyright



Login to HINARI

Search bar with magnifying glass icon and Search button

- HINARI
- About HINARI
- Access the content
- Eligibility
- Partners
- Training materials
- Promoting HINARI
- Contributions

HINARI Training Materials

Distance learning courses

The HINARI Short Course (for users) and the HINARI Train the Trainers Course (for trainers from developed countries) are online on the Medical Library Association (USA) distance learning server as well as on the Information Training and Outreach Center for Africa (ITOCA) site.

These courses are self-paced, take 4-6 hours. Upon completion of the exercises, students will receive certificates.

Access and registration to distance learning courses :

- through the Medical Library Association (USA) [↗](#)
- through the Information Training and Outreach Center for Africa (ITOCA) [↗](#)

HINARI User Training Video Series

This free Video Series consist of short videos that users at HINARI institutions can watch to learn HINARI basics, such as what is HINARI, how to access e-journals via HINARI, and how to search PubMed via HINARI. Videos are available online, and can also be freely downloaded or ordered on CD for no charge. Audio and text files are included. The website includes optional online quizzes and exercises. The whole series can be watched in under 30 minutes.

These materials are available through a Duke University project.

– [Training videos](#) [↗](#)

Training modules

These modules are the components of the 'Train the Trainers' course. The material is comprehensive overview of the program. Each module contains a presentation and practical exercises.

Tip of the month

- [PubMed update](#)

Material de treinamento HINARI

[HINARI Capacitação em Português](#)

Training on Sister Programmes



Training materials for Access to Global Online Research in Agriculture [↗](#)



Training materials for Online Access to Research in the Environment [↗](#)

Photo Album

[HINARI Trainers Photo Album](#) [↗](#)

Information Training and Outreach Center for Africa (ITOCA)



Brief training

HINARI Short Course

Basic HINARI skills including Background, Registration & Login, Searching Strategies, HINARI and PubMed website features, MY NCBI and Training Materials. Self-paced, 4-8 hours to complete; also available as a distance learning course

CH-1211 Geneva 27
Switzerland
Fax: +41 22 791 4150
hinari@who.int

Training tools

↓ [Hinari 10 top Hints for use](#)

📎 ppt, 321kb

Useful ideas to use HINARI

↓ [HINARI: Access Problems and Solutions - updated 02 2010](#)

📎 ppt, 1.10Mb

Answers for common access problems

↓ [HINARI: The Basics - updated 02 2010](#)

📎 doc, 46kb

One page summary of key points

[HINARI: Do's and Don'ts - updated 04 2010](#)

Summary of copyright do's and don'ts

↓ [HINARI Frequently Asked Questions](#)

📎 ppt, 307kb

Common questions asked by others

↓ [HINARI Payment: The Basics - updated 05 2009](#)

📎 doc, 30kb

Outline of procedures for Band 2 countries

↓ [HINARI Printing, Copying, Saving and Emailing Articles: Pro](#)

- updated 03 2009

📎 ppt, 1.96Mb

Answers for common printing and downloading problems

↓ [HINARI Registration Guidelines - updated 12 2010](#)

📎 pdf, 266kb

A step by step guide to registering

↓ [HINARI Training Material Overview - updated 09 2010](#)

📎 ppt, 2.29Mb

A summary of the HINARI training material - for trainers & cou

This slide highlights the **Brief training HINARI Short Course** and various **Training Tools** plus **Presentations**.

Also note the **Authorship Skills** material – series of modules written to assist researchers in publishing their outcomes.

Presentations

↓ [HINARI & R4L Overview for visitors from Eligible Countries - updated 12 2010](#)

📎 ppt, 2.33Mb

Overview for potential users or individuals who have linkages with eligible institutions.

[HINARI Overview for Registered Institutions - updated 04 2010](#)

For presentation at HINARI registered institutions; to promote the various resources (e-journals, reference sources, databases, etc.) to potential users.

Authorship skills

[Hinari Authorship Skills](#)

Modules developed to assist authors in HINARI eligible countries; includes 'How to Write a Scientific Paper/Structured Abstract', 'Copyright and Plagiarism', 'Strategies of Effective Writing' and a 'Web-Bibliography'.

HINARI ‘Additional Resources’ Modules

- 7.1 – CINAHL Database for HINARI Users (nursing and allied health resources)
- 7.2 – Evidence-based Practice Resources for HINARI users
- 7.3 – WHO Resources
- 7.4 – Information Literacy
- 7.5 – E-book Resources for HINARI users (HINARI and Internet resources)

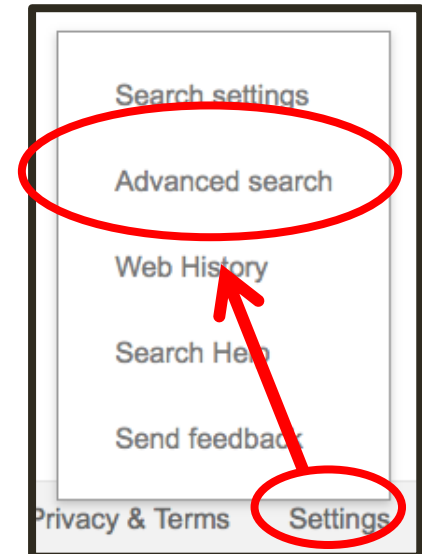
http://hinari-gw.who.int/whalecomwww.who.int/whalecom0/hinari/training/module_7_additional_resources/en/index.html

Key Points of HINARI

- Gateway providing **free** access to health research and information for SCU students, staff, and faculty.
- Proper **login required** with User ID and Password.
- Allows browsing of **journals** and books by title, language, subject, and publisher.
- Provides access to several collections of resource material, including **eBooks and databases**.
- Access Partner **publisher websites** via HINARI, another way to access peer-reviewed health information online.

Search Engines: Advanced Search

- Many search engines and websites offer an **Advanced Search** feature.
- This allows you to narrow your search and make it more targeted.
 - For example, you can often filter your search results by date, author, language, type of resource, etc.



malaria management

**Example of
Google
Advanced Search**

Find web pages that have...

all these words:

malaria

this exact wording or phrase:

one or more of these words:

management

OR

treatment

OR

But don't show pages that have...

any of these unwanted words:

Need more tools?

Reading level:

no reading level displayed

Results per page:

10 results

Language:

any language

File type:

any format

Ex. pdf, PowerPoint

Search within a site or domain:

Ex. .gov, .edu

(e.g. youtube.com, .edu)

google.com/advanced_search

Advanced Search

[Web](#)[Images](#)[Maps](#)[Shopping](#)[More ▾](#)[Search tools](#)

About 142,000 results (0.24 seconds)

Ad related to **bednets malaria site:.org** ⓘ

[Treated Mosquito Nets - Long Life Insecticide Treated Nets](#)

[www.buzz-off.org/](#) ▾

LLIN **nets** for best protection!

[Bed Nets for Children | CDC Foundation](#)

[www.cdcfoundation.org/bednets](#) ▾

In Africa, a child dies from **malaria** every 60 seconds. To celebrate World **Malaria** Day 2013, CDC Foundation purchased 1,500 **bed nets** for CDC to distribute.

[Send a net. Save a life. | Nothing But Nets | United Nations ...](#)

[www.nothingbutnets.org/](#) ▾

What Is **Malaria**? Every 60 seconds, a child in Africa dies from **malaria**. But insecticide-treated **bed nets** can keep kids safe >> · introducing team bzzzkill ...

[About the Campaign - What Is Malaria? - Act - Media](#)

[\[PDF\] INSECTICIDE-TREATED MOSQUITO NETS - World Health ...](#)

[www.givewell.org/files/DWDA%202009/.../Nets/itnspospaperfinal.pdf](#) ▾

WHO Global **Malaria** Programme: Position Statement on ITNs. 1

Indira F. Smith. The impact of spatial distribution of mosquito nets on malaria control

Google Scholar

- *scholar.google.com*
- Searches for **scholarly literature**, including peer-reviewed papers, theses, books, abstracts and technical reports
- Finds articles from academic publishers, professional societies, universities, etc., as well as scholarly articles on the web
- "Cited by" link identifies # that have cited the original
- Access to full-text often only available with subscription
- **Caution:** Not a reliable sole source for searching scholarly literature



nurses swaziland



Scholar

About 2,220 results (0.02 sec)

Articles

[Nurse-managed care for health care workers in southern Africa](#)

P Mamba, M Dlamini, RK Mallinson... - ... International Journal of ..., 2013 - ingentaconnect.com

Case law

... References 1 **Swaziland Nurses Association**. **Swaziland** Wellness Centre policy document. Manzini, **Swaziland**: SNA, 2009: p 6. Page 3. ... 4 Kober K, Van Damme W. Public sector **nurses** in **Swaziland**: can the downturn be reversed? Hum Resour Health 2006; 4: 13. ...

[Import into EndNote](#) [More](#) ▾

Any time

Since 2013

Since 2012

Since 2009

[\[HTML\] Voluntary medical male circumcision: strategies for meeting the human resource needs of scale-up in southern and eastern Africa](#)

K Curran, E Njeuhmeli, A Mirelman, K Dickson... - PLoS medicine, 2011 - dx.plos.org

Custom range...

... up that have already been implemented include the following: moving public sector clinicians to high-volume VMMC sites during campaigns (Tanzania), empowering **nurses** to conduct VMMC surgery (Kenya), and identifying untapped reserves of qualified **nurses (Swaziland)**. ...

[Cited by 17](#) [Related articles](#) [All 29 versions](#) [Import into EndNote](#) [More](#) ▾

Sort by relevance

Sort by date

[Global Perspectives on the Ministry of Parish Nursing Practice: Frequently Used Interventions by Parish Nurses in Swaziland Africa, United Kingdom and United ...](#)

P Solari-Twadell - 41st Biennial Convention (29 October-2 November ..., 2011 - stti.confex.com

This presentation compares data from a replication of a national study of most frequently used nursing interventions by parish **nurses** in the United States. The purpose of the international studies is to identify the most frequently used interventions by parish **nurses** ...

[All 2 versions](#) [Import into EndNote](#) [More](#) ▾

include patents

include citations

Create alert

Must Evaluate Web Resources: Evaluation Strategies

- Evaluate using checklist entitled:
Criteria for Evaluating Web Resources
- Determine the type of site by analyzing
Website Addresses
- A User's Guide to Finding and Evaluating Health
Information on the Web
mlanet.org/resources/userguide.html

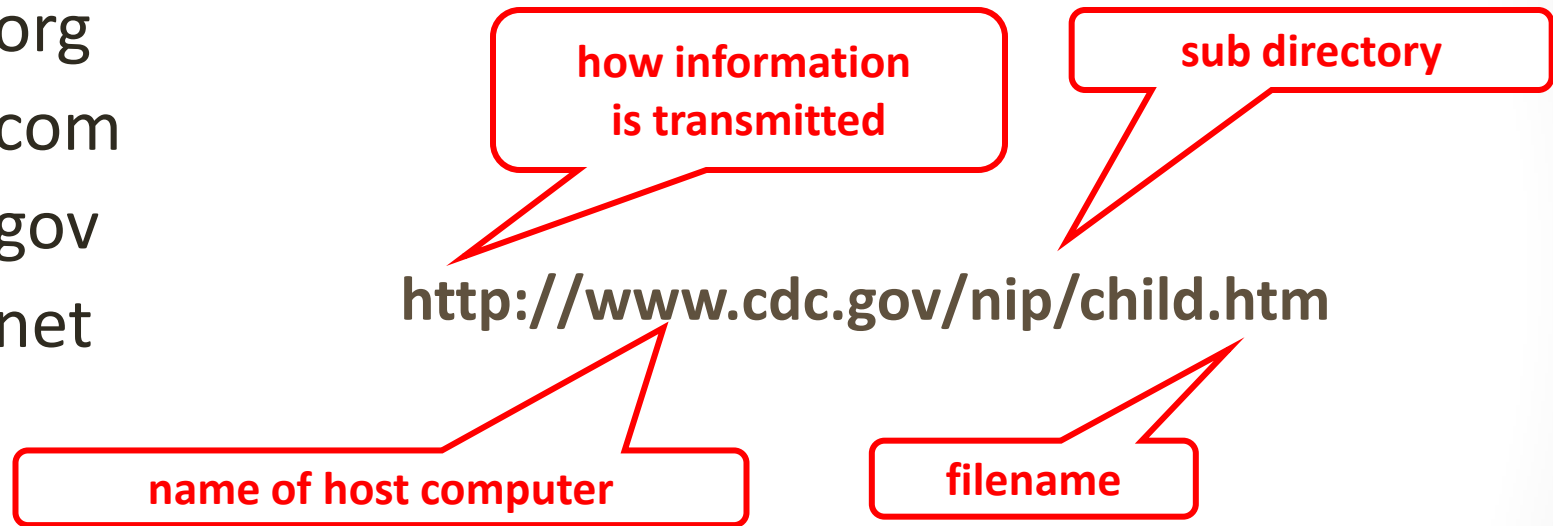
Criteria to Evaluate Online Information

1. Authority
2. Accuracy
3. Objectivity
4. Coverage & Purpose
5. Currency



Analyze the Website Address

- edu
- org
- com
- gov
- net



The URL (Uniform Resource Locator) includes the name of the host computer which can indicate the purpose of the web site.

Selected Sources of Health-Related Online Course Materials

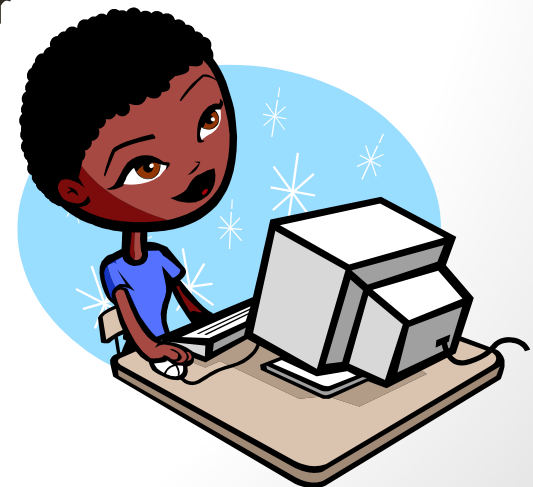
- See the *Swaziland: Health Information Resources for Students and Faculty at SCU* libguide **Teaching Resources** tab <http://libguides.hsl.washington.edu/swaziland>
- Supercourse - epidemiology, the internet, global health
 - Repository of free lectures on global health and prevention
- Open Courseware Consortium
 - Course resources that can be used and adapted freely
- Training Modules from WHO
 - Teaching materials available on most topics

More Sources of Health-Related Online Course Materials

- HEAL Health Education Assets Library
 - <http://library.med.utah.edu/heal/>
 - Collection of over 22,000 freely available digital materials for health sciences education
- Health Sciences Online
 - <http://hso.info/hso/cgi-bin/query-meta?v%3aframe=form&frontpage=1&v%3aproject=HSO&>
 - Free, online linkages to a comprehensive collection of top-quality courses and references in medicine, public health, pharmacy, dentistry, nursing, basic sciences, and other health sciences disciplines

Key Points of today's session

- Basic **searching of CINAHL** to find citations to health-related journal articles
- Additional HINARI databases, i.e., POPLINE, AJOL
- Access full-text articles from **Publishers** section of HINARI
- Resources for **HINARI instruction**
- **Advanced Google** and **Google Scholar**
- **Evaluating** resources on the web
- **Teaching Resources**



For more information

*Swaziland Health-related Information
Resources for Students and Faculty*

libguide:[http://libguides.hsl.washington.edu/swazi
land](http://libguides.hsl.washington.edu/swaziland)